

FASP Swivel Fitting Instructions for Renault Master/Nissan Interstar and Vauxhall Movano 2010+

Part numbers:

Driver: 1305.5839DX

Passenger: 1305.5839SX

It is recommended that all items supplied by Jennings Seats are installed by a qualified and competent professional.

If you have any questions regarding the installation of the products supplied, please call 01270 257417.

With each swivel you should have the following:

X4 M8 20mm Countersunk Bolt

X4 M8 20mm Hex Head Bolt

X6 Nyloc Nuts

X6 M8 Washers

Fitment notes:

In order for the driver's seat to rotate, the handbrake needs relocating.

- Before starting work on the vehicle, ensure that the vehicle cannot move whilst being worked on. i.e have the vehicle on a workshop ramp or the wheels chocked and the vehicle in gear.
- Slide the seat all the way forwards, this will expose the bolts holding the seat sliders in position. Undo the rear bolts.
- Slide the seat all the way backwards. Remove the front bolts.
- Check for any electrical plugs and disconnect.
- Remove the seat from the vehicle. On some vehicles you have to pull the seat towards you before pulling up as it is locked in position. You may also need to disconnect the seatbelt if this is attached to the seat.
- Once the seat is removed, you should have clear access to the top of the seat base frame, which has six threaded holes in the top face.

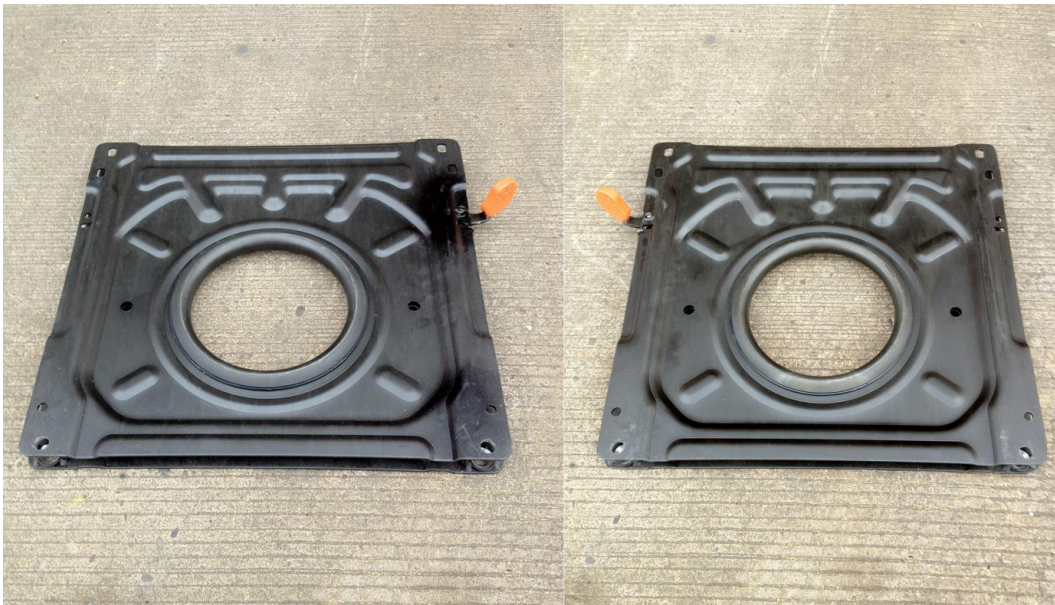
- Offer the swivel up to the top face of the base box. The swivel should be orientated with the orange lever pointing towards the centre of the vehicle (pictures on other sheet supplied).
- Rotate the swivel 45 degrees to expose the holes in the bottom plate (ensure the swivel is not going to be dropped when doing this!).
- With the holes in the bottom plates of the swivel accessible you can fasten the swivel to the base box. You will need to use 4 of your original bolts. At the rear of the swivel, you will see there are countersunk cups. Use 2pcs of the countersunk bolts supplied for the 2 holes at the rear of the bottom plate of the swivel. Use your 4pcs original bolts for the remaining 4 bolts holes, using 2pcs washers for the middle set of holes. Install the bolts in a diagonally opposite pattern, tightening them incrementally by equal amounts to ensure the swivel fastens down square.
- The swivel should now be secured to the base frame.
- Offer the seat up to the top plate of the swivel. The holes in the sliders should align with the holes in the top plate of the swivel.
- The bolts securing the swivel to the sliders are installed with the head facing down and the thread going up into the track.
- Use the 4pcs remaining hex head bolts, with the 4pcs remaining washers in the front and middle set of holes. Use the 2pcs remaining countersunk bolts at the rear, the same as previous.
- Fasten the bolts into the track using the 6pcs nyloc nuts supplied.
- Install these bolts in the same diagonal method as previous. Fasten securely.
- Re-fit any electrical connectors and the seatbelt, if removed.
- Double check all fastenings are secure. Refer to the workshop manual for any torque figures required.
- The seat may need to be lifted into the high position in order to rotate.
- The handbrake normally needs to be in the off/down position to spin. Again, ensure the vehicle cannot move before disengaging the handbrake.
- The driver's side swivel for the Master/Movano/Interstar requires the handbrake to be remounted in a lower position in order for the seat to rotate.
- You may find that the plastic covers on the seat base may need trimming to suit.

FRONT OF THE VEHICLE

- The Orange handle should point towards the front and centre of the vehicle, and pointing upwards. (As picture shows)
- The large centre circle of the swivel should be off centre towards the rear of the vehicle.
- The swivels rotate towards the centre of the vehicle (Clockwise for the passenger's side and Anti clockwise for the driver's side).
- The best way to fit them is to swivel the plate so there is access to the bottom plate holes then bolt the bottom of the swivel to the top of the base box/frame then bolt the seat and runners to the top of the swivel.

PASSENGER'S SIDE

DRIVER'S SIDE



BACK OF THE VEHICLE