

FASP Single Swivel Fitting for Fiat Ducato/Boxer/Relay 2007 – Present

Part number 1305.7921 DX = Driver SX = Passenger

It is recommended that all items supplied by Jennings Seats are installed by a qualified and competent professional.

If you have any questions regarding the installation of the products supplied, please call 01270 257417.

With each swivel you should have the following:

X6 M8 x 30mm Hex Head Bolt

X6 M8 x 16mm Spacer

X6 M8 Nyloc Nut

X6 M8 Washer

- Before starting work on the vehicle, ensure that the vehicle cannot move whilst being worked on. i.e have the vehicle on a workshop ramp or the wheels chocked and the vehicle in gear.
- Slide the seat all the way forwards, this will expose the bolts holding the seat sliders in position. Undo the rear bolts.
- Slide the seat all the way backwards. Remove the front bolts.

- Check for any electrical plugs and disconnect. Normally there is a plug going to the seatbelt buckle.
- Remove the seat from the vehicle. On some vehicles you have to pull the seat towards you before pulling up as it is locked in position.
- Once the seat is removed, you should have clear access to the top of the seat base frame, which has six threaded holes in the top face.
- Offer the swivel up to the top face of the base box. The swivel should be orientated with the orange lever pointing towards the centre of the vehicle (pictures on other sheet supplied).
- Rotate the swivel 45 degrees to expose the holes in the bottom plate (ensure the swivel is not going to be dropped when doing this!).
- With access to the holes in the bottom plate of the swivel, fasten the swivel to the base frame. Use the bolts removed from the seat sliders. Install the bolts in a diagonally opposite pattern and tighten by equal measure, incrementally, in the same pattern.
- The swivel should now be secured to the base frame.
- The 16mm spacers need to be installed between the top plate of the swivel and the bottom of the seat slides to create clearance between the seatbelt pre-tensioner and the swivel handle. If your vehicle is not equipped with a seatbelt pre-tensioner then the spacers are not required.

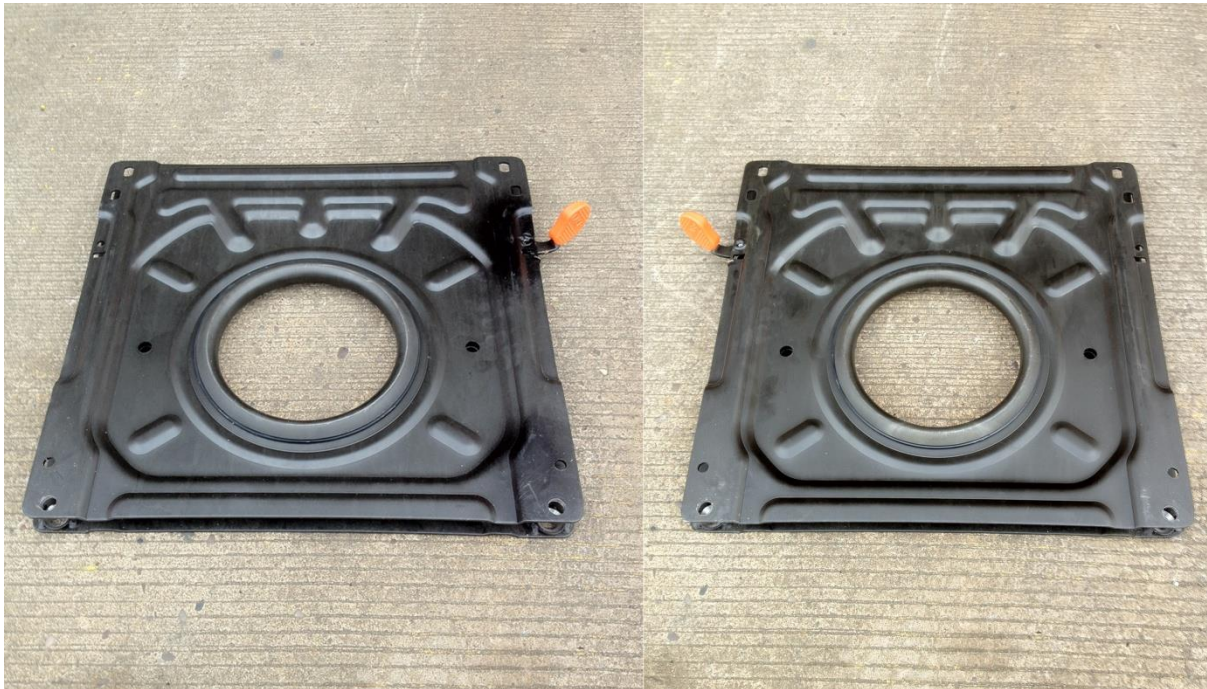
- We have found the best way to install the spacers is to lift the seat into position on top of the swivel and then lift the seat slightly in each corner to slide the spacer under the slider. It is a bit fiddly!
- Once the spacers are in position, install the 30mm bolts with the head facing down and the thread into the track of the slider. Fit a washer under the head of the bolt.
- Install the nut on the bolt in the slide track.
- Install these bolts in the same diagonal method as previous. Fasten securely.
- Re-fit any electrical connectors and the seatbelt, if removed.
- Double check all fastenings are secure. Refer to the workshop manual for any torque figures required.
- The seat may need to be lifted into the high position in order to rotate.
- The handbrake normally needs to be in the off/down position to spin. Again, ensure the vehicle cannot move before disengaging the handbrake.

FRONT OF THE VEHICLE

- The Orange handle should point towards the front and centre of the vehicle, and pointing upwards. (As picture shows)
- The large centre circle of the swivel should be off centre towards the rear of the vehicle.
- The swivels rotate towards the centre of the vehicle (Clockwise for the passenger's side and Anti clockwise for the driver's side).
- The best way to fit them is to swivel the plate so there is access to the bottom plate holes then bolt the bottom of the swivel to the top of the base box/frame then bolt the seat and runners to the top of the swivel.

PASSENGER'S SIDE

DRIVER'S SIDE



BACK OF THE VEHICLE